

# SMP 686 PW Power Window Kit Operation Manual

**CAUTION:** Read the information carefully before installation. Talking should only be done by a professional.

OUR COMPANY GUARANTEES EXCLUSIVELY IN THE EVENT OF INSTALLATION BY A SERVICE CENTER.

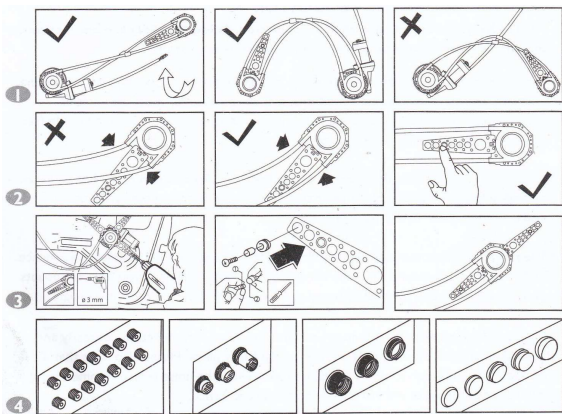
We have summarized the important installation conditions that apply to most cars.

Remove the handle and door trim. Test that the structure can be inserted (see section 2 of the installation instructions)

After removing the handle, make sure that there is a minimum distance of 12 mm between the window rail and the door trim. If not, read the installation guide for possible solutions.

The maximum strength of the structure is 3 kg. Apply 70 mm from the center. This power is sufficient for most car types. If in doubt or the car has particularly heavy weight control, check the weight.

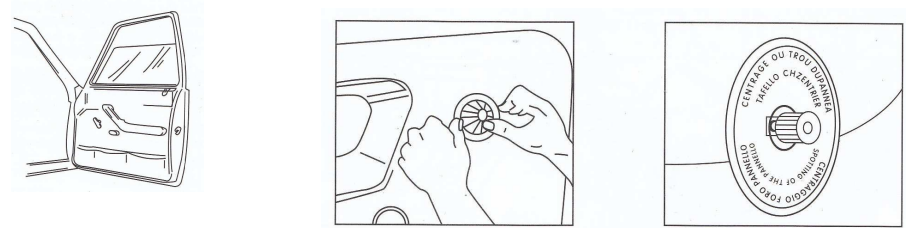
Prior to installation, make sure that the mechanical functions of the door are working properly. If necessary, grease parts or replace defective parts. Test the manual equipment for noise. The cause of the noise must be eliminated before installation, because the electronic operation amplifies the noise.



Cover the window. Remove the window roller.

Apply the self-adhesive template to the center of the pivot as shown.

Remove the door panel.

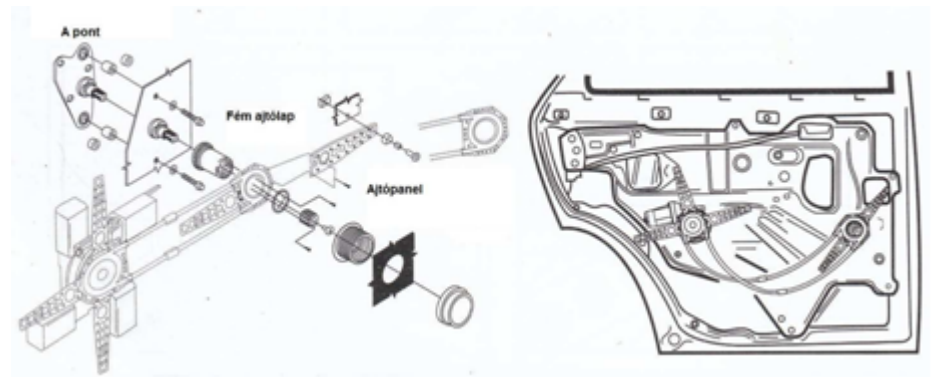


Carefully remove the outer door trim.

Find the correct (fitting) position of the mechanics.

See which structure fits the door better (there are 2 symmetrical structures). The constriction will be located outside the cover.

The installation will require some adapters (spacer gears) between the reducer and the panel. The supplied bracket may be required when mounting the restrictor or motor

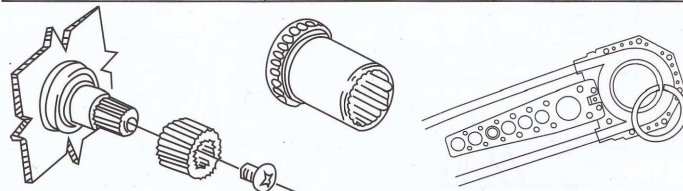


Select the appropriate adapter according to the table below and mount it on the handle pivot. If the handle (handle) is secured with a screw, use a screw again to secure the adapter.

Select the gear cover according to the table.

Mount on the reducer and secure with connector (set 1)

N. 1: ALFA ROMEO / AUTOBIANCHI BEDFORD / DAF / DATSUN FIAT / FORD (CEE) / LANCIA MERCEDES / NISSAN / OPEL PORSCHE / SAAB / SUBARU VOLKSWAGEN	N. 4: AUSTIN / ROVER N. 5: VAUXHALL / JAGUAR BEDFORD / ROVER N. 6: FORD (UK) N. 7: OPEL	N. 9: HONDA N. 10: MAZDA / FORD (U.S.A.) N. 11: ISUZU N. 12: FORD (U.S.A.)
N. 2: ARO / CITROEN / PEUGEOT RENAULT / SEAT / TALBOT	N. 8: DAIHATSU / MITSUBISHI TOYOTA / SUZUKI / G. M. CHEVROLET / PONTIAC	N. 13: DODGE / CHRYSLER
N. 3: AUDI / BMW / FIAT / VOLVO FORD (CEE) / PORSCHE VOLKSWAGEN		

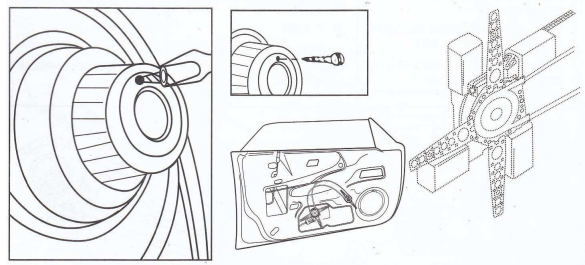


Find the right place in the door to secure it.

**ATTENTION!** The motor must be installed first and only then insert the gear into the handle pivot.

You can change your location if necessary. To change the position, unscrew the screw, turn the motor as shown and unscrew it to the correct position.

Fit the reducer to the gear so that the two holes coincide and secure with the supplied screw (set no. 1).



Before installing the gears, check the operation of the door latch.

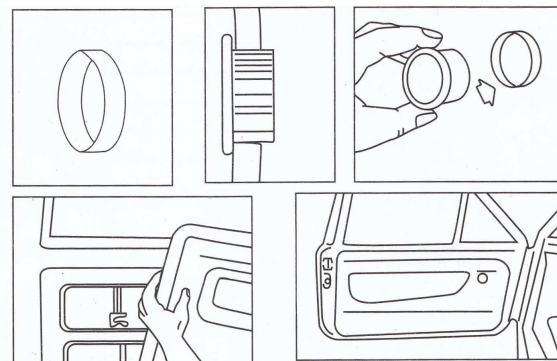
Then install the center gear so that the two holes coincide and secure with the supplied screw (set 1).

Install the connector in the door trim.

If necessary, widen the hole in the cover.

Select the appropriate connector, insert it into the door cover (case) and secure with the locking ring. Choose the most suitable cap and mount it on the connector.

Attach the cap to the connector and insert it into the door trim.



**Importer;**

**S.M.Power Kft**

**2310 Szigetszentmiklós, Csepeli út 15**

**[www.smpower.eu](http://www.smpower.eu)**